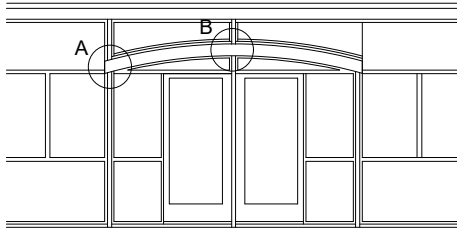
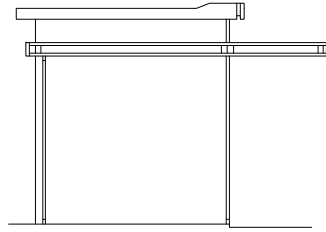


## ACESSOS E COBERBERTURAS



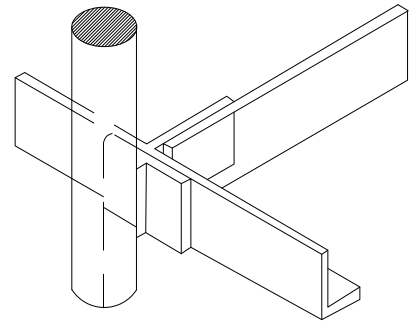
ELEVAÇÃO DA COBERTURA

escala 1/8" = 1'-0"

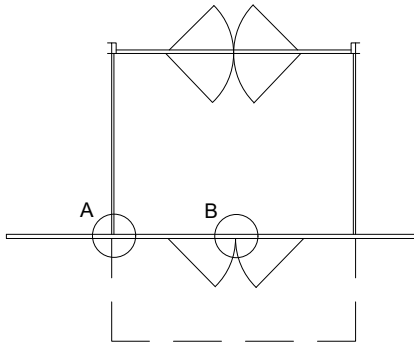


CORTE NA COBERTURA.

escala 1/8" = 1'-0"

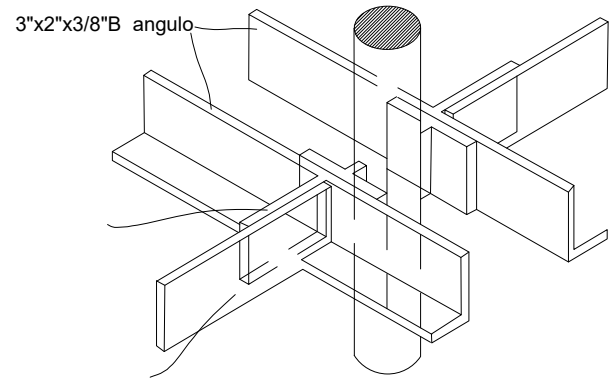


PORMENORES DA ESTRUTURA METÁLICA AT A.



PLANTO AO NÍVEL DA PORTA

escala 1/8"= 1'-0"



PORMENORES DA ESTRUTURA METÁLICA AT B.