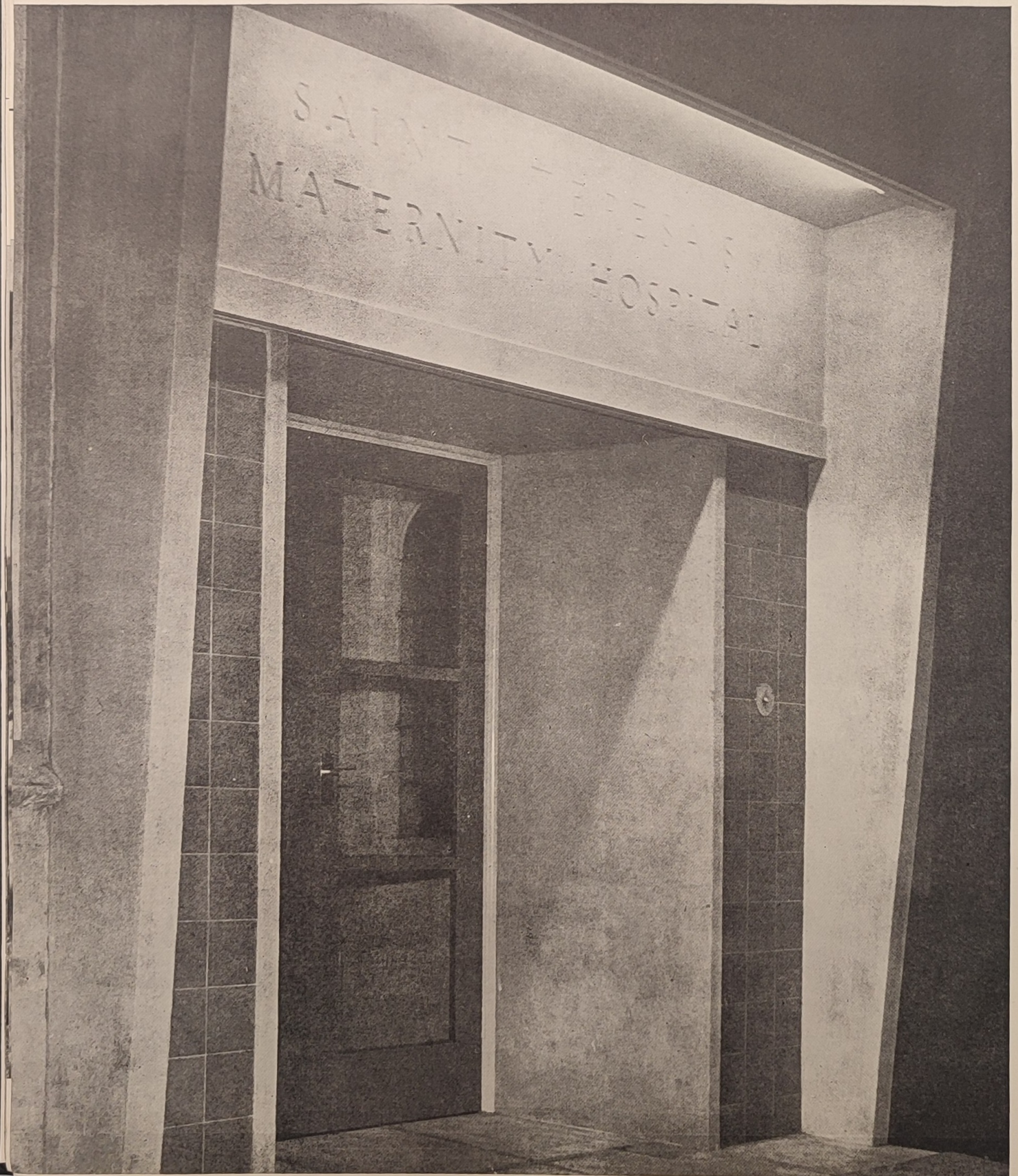
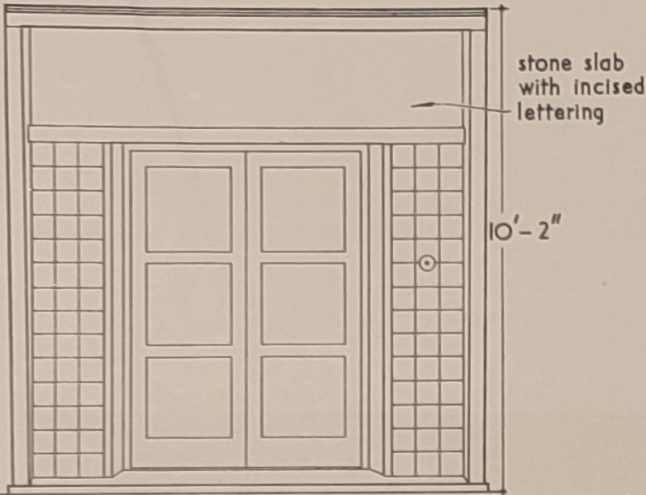


DOORS

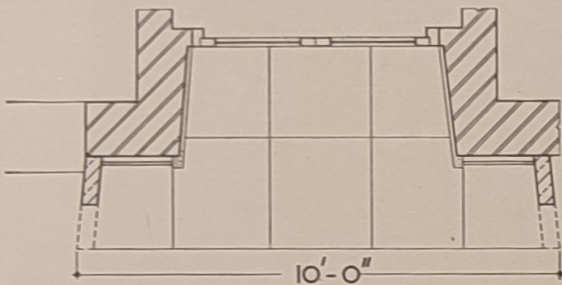
DOORWAY: MATERNITY HOSPITAL AT WIMBLEDON DESIGNED BY H. H. CLARK

The stone canopy has strip lighting in the head to illuminate the doorway, the tiled jambs, and the stone-faced lintel bearing the name of the hospital in incised letters.

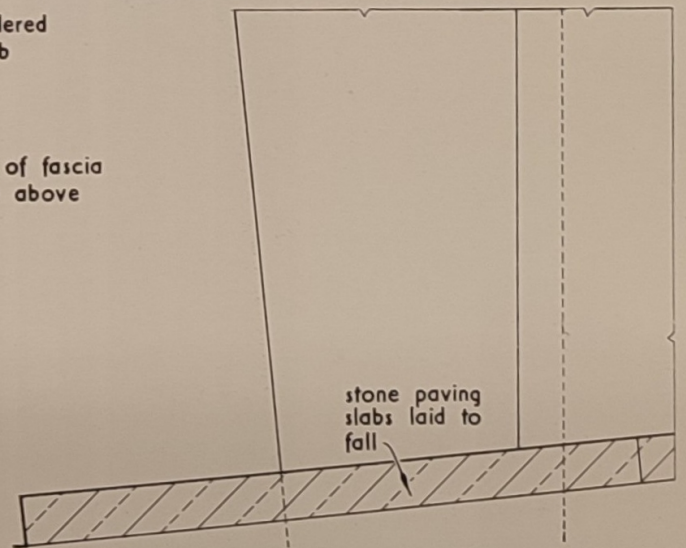
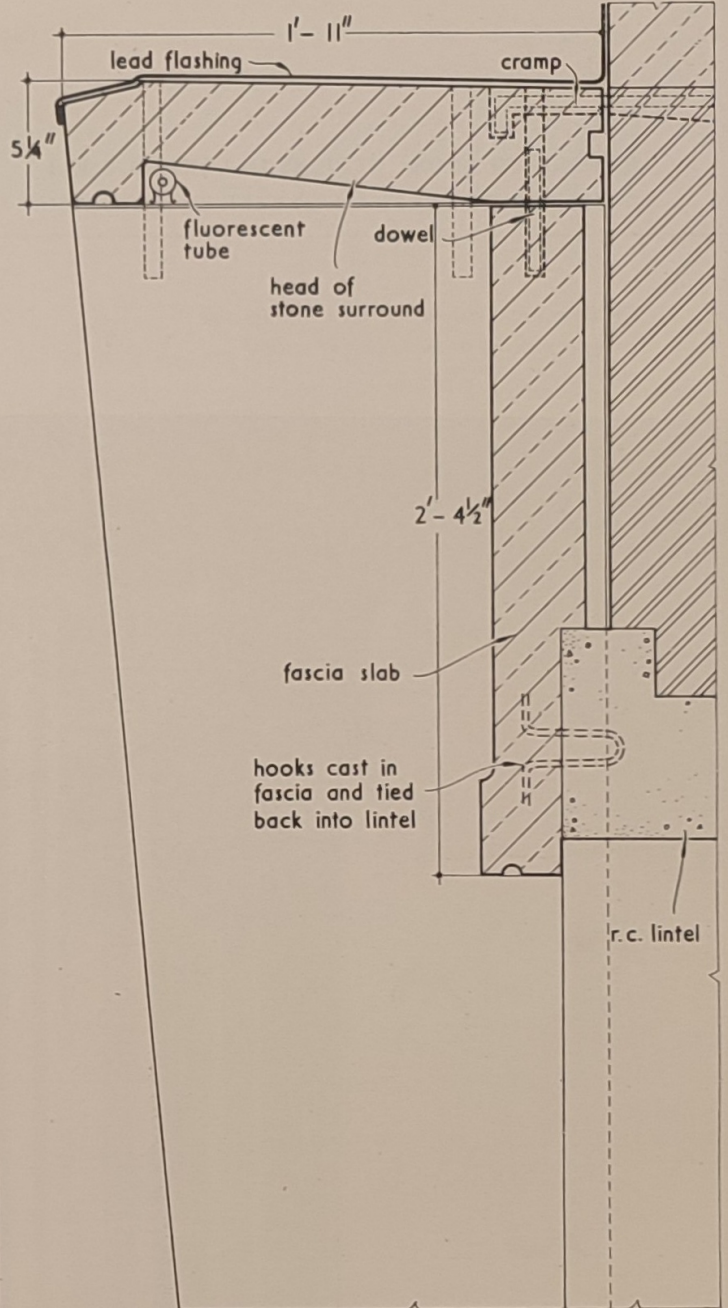




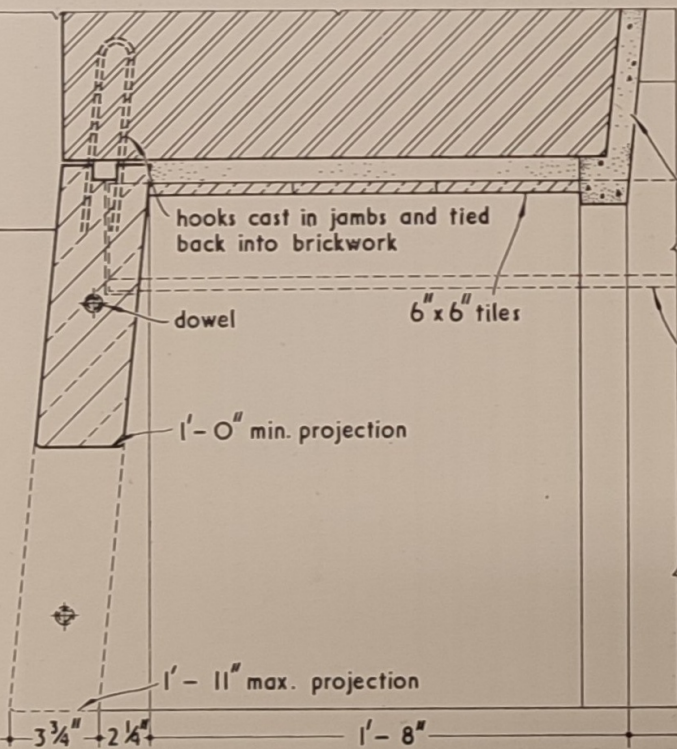
ELEVATION OF ENTRANCE.



PLAN. scale $\frac{1}{4}'' = 1' - 0''$



VERTICAL SECTION SHOWING FIXING OF SURROUND.



PART PLAN OF ENTRANCE. scale $\frac{1}{2}'' = 1' - 0''$