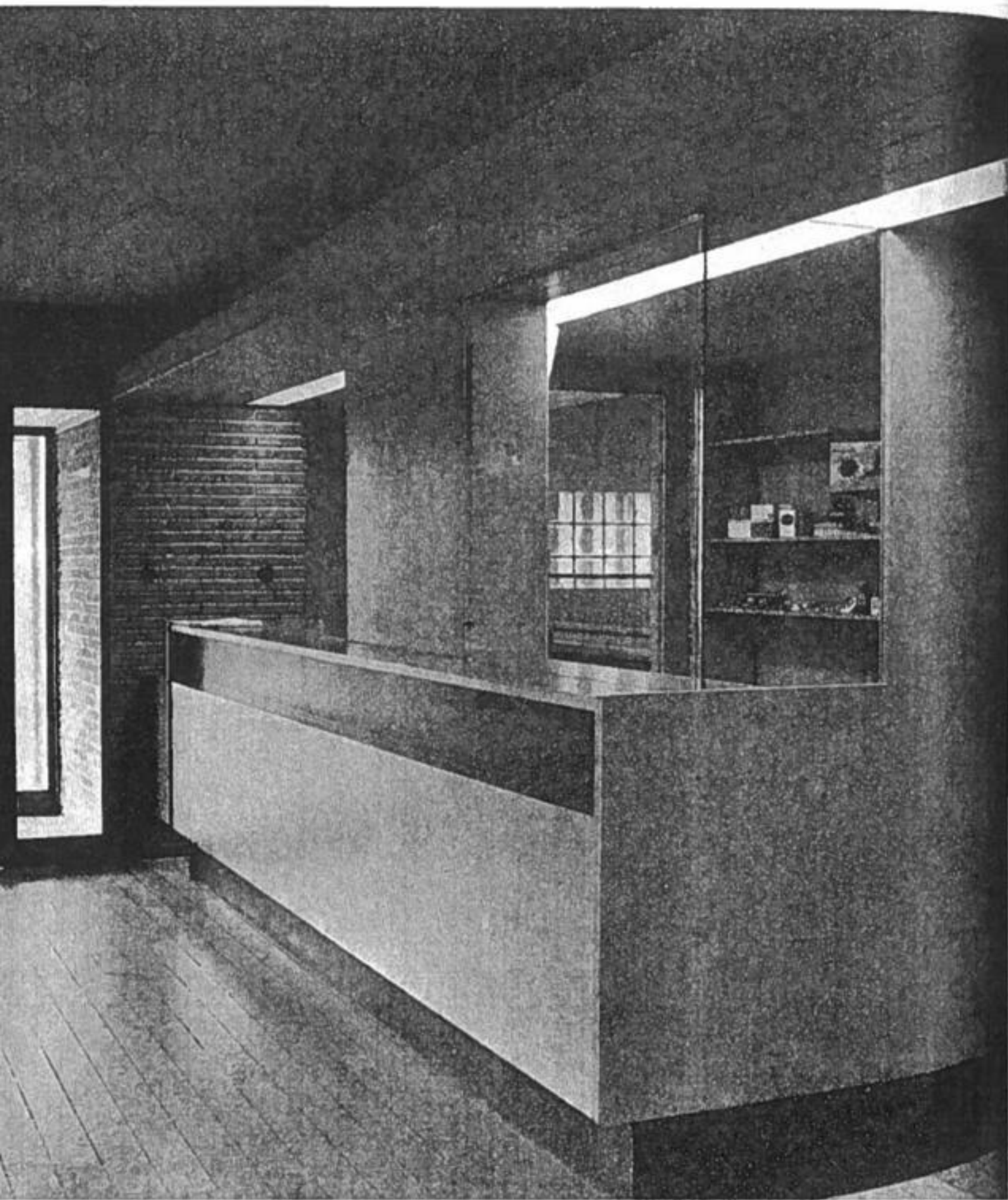


RECEPTION COUNTER: TRAINING CENTRE IN STOCKHOLM, SWEDEN  
DESIGNED BY ANDERS TENGBOM

(Material supplied by Alice Mylo)

*This dual reception desk/shop counter is carefully planned and well finished. A dark brown linoleum is used for the counter top, for the back of the recess beneath and for the skirting. The underside of the suspended ceiling over the counter is of polished golden brown Oregon pine as are the other visible wood surfaces. One refinement is that the metal brackets and tracks for the glass shelves are oxidised a dark brown.*



ELEVAT

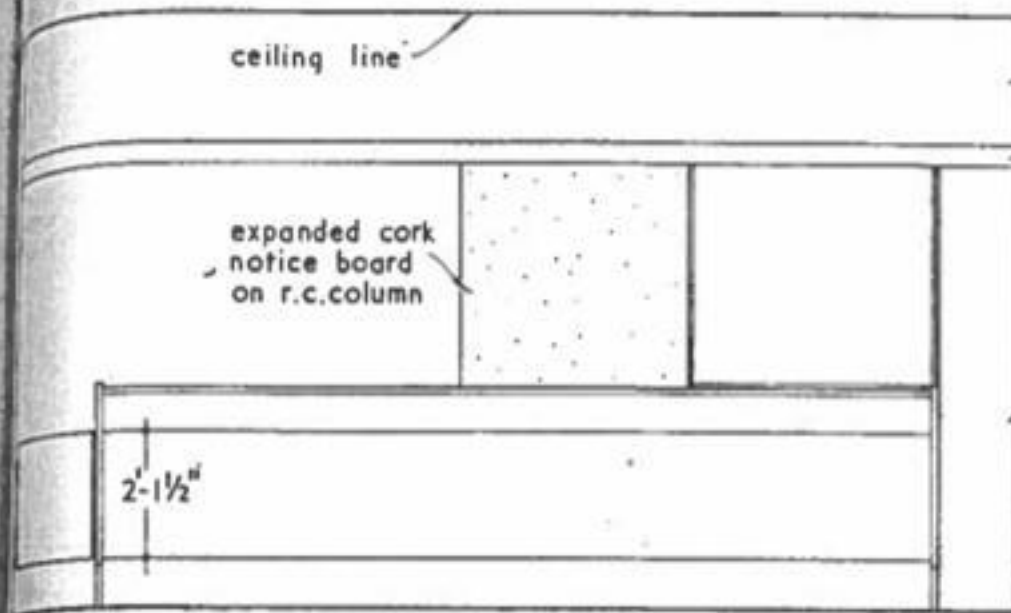
PLAN.

Oreg  
lacia

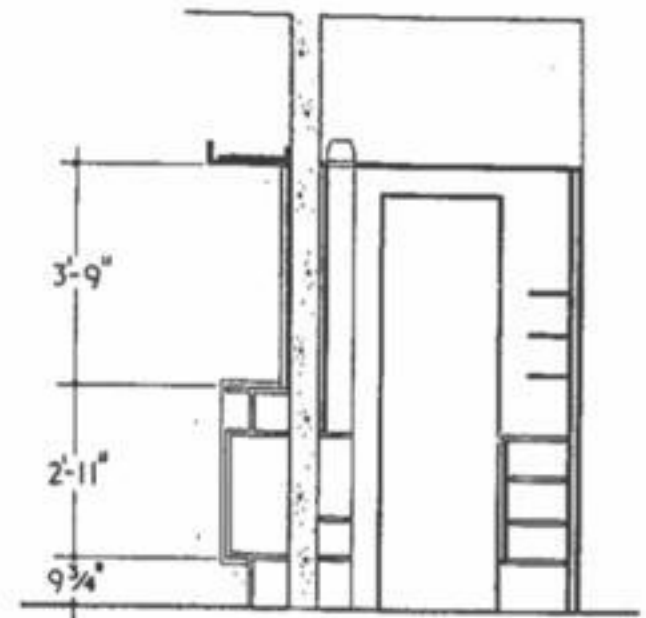
Oreg  
osini

count  
reces  
with

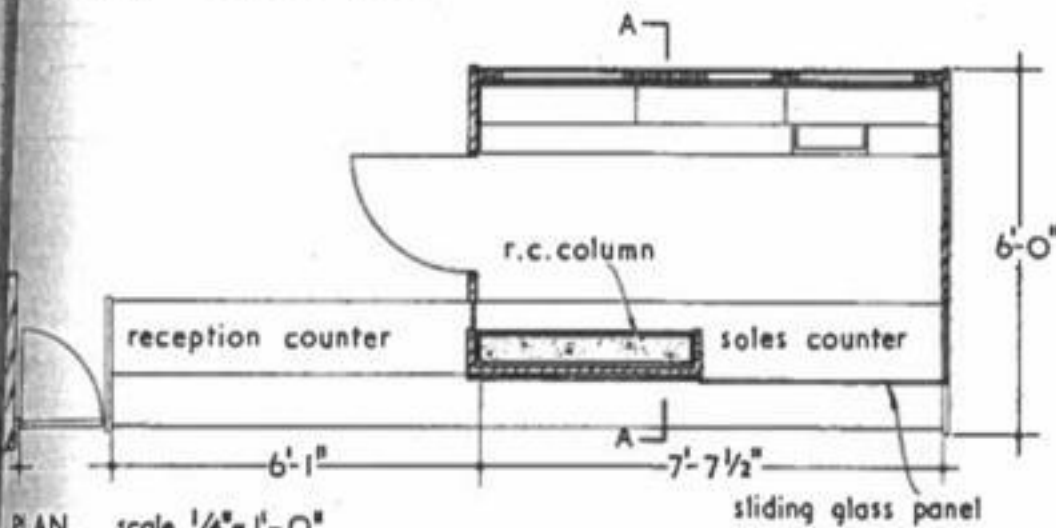
skirt  
2mm  
/ SEC



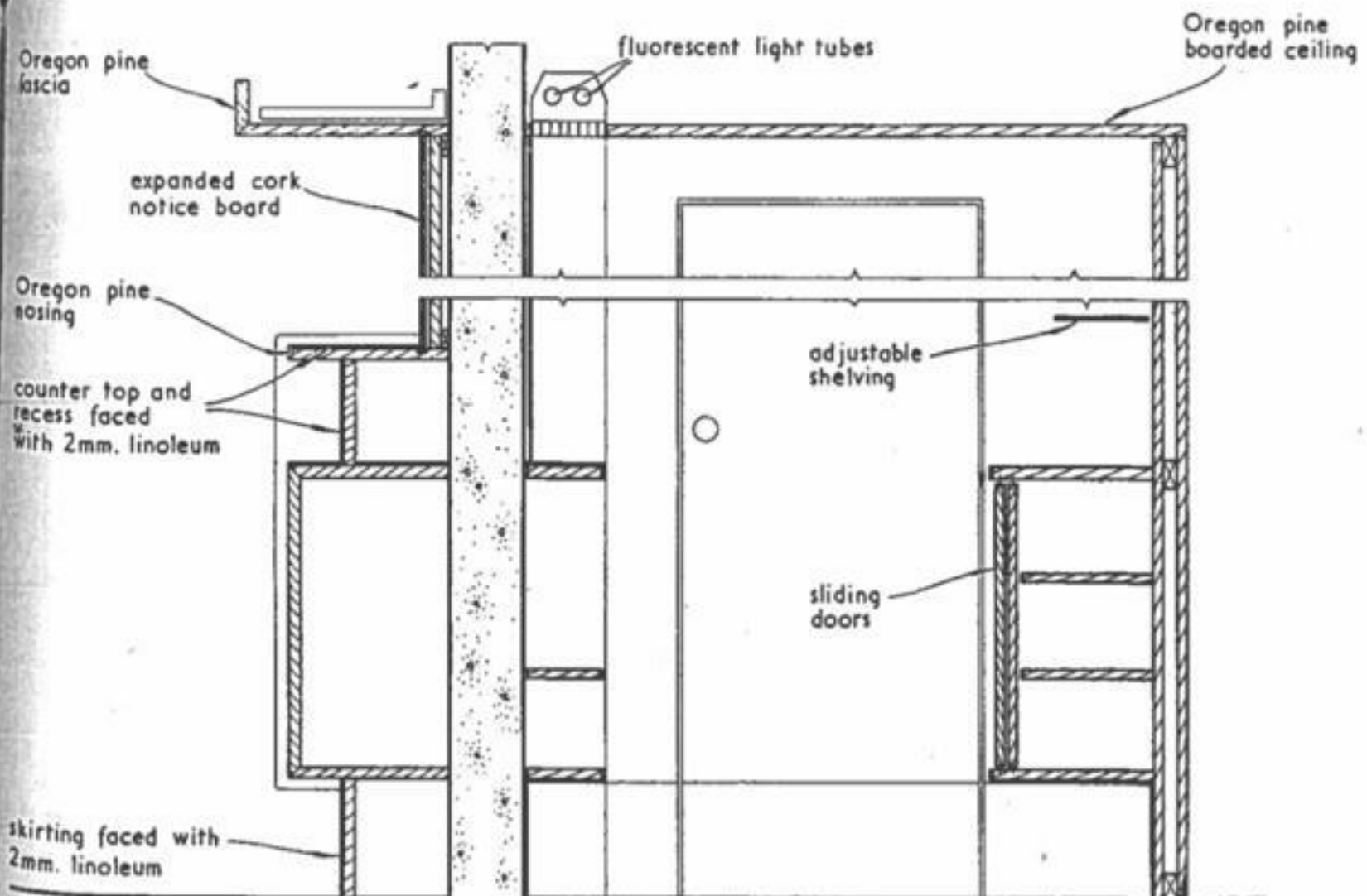
ELEVATION. scale  $\frac{1}{4}'' = 1'-0''$



SECTION.  $\frac{1}{4}'' = 1'-0''$



PLAN. scale  $\frac{1}{4}'' = 1'-0''$



SECTION A-A. scale  $\frac{3}{4}'' = 1'-0''$

note: figured dimensions in feet and inches are approximate