

Bruna Martins 20201305
Bruna Tavares 20161221
Catarina Mota 20201231
Stefan Bilan 20201222
Turma 3F

VILLA SAVOYE

Arquiteto: Le Corbusier



MODELAÇÃO E VISUALIZAÇÃO TRIDIMENSIONAL EM ARQUITECTURA
TRABALHO DE GRUPO FASE1

U LISBOA

UNIVERSIDADE
DE LISBOA



FACULDADE DE ARQUITECTURA
UNIVERSIDADE DE LISBOA

Mestrado Integrado em Arquitectura
Ano Lectivo 2022-2023 2º Semestre
Docente - Nuno Alão 3º Ano

20201231

CATARINA PESTANA MOTA



U LISBOA

UNIVERSIDADE
DE LISBOA



FACULDADE DE ARQUITETURA
UNIVERSIDADE DE LISBOA

MVTA

Mestrado Integrado em Arquitectura
Ano Lectivo 2022-2023 2º Semestre
Docente - Nuno Alão 3º Ano

DESENHOS TÉCNICOS

Planta Piso Térreo

Planta Piso 1

Planta Piso 2

Corte Longitudinal

Alçado 1- vista de trás

Alçado 2- vista de Frente

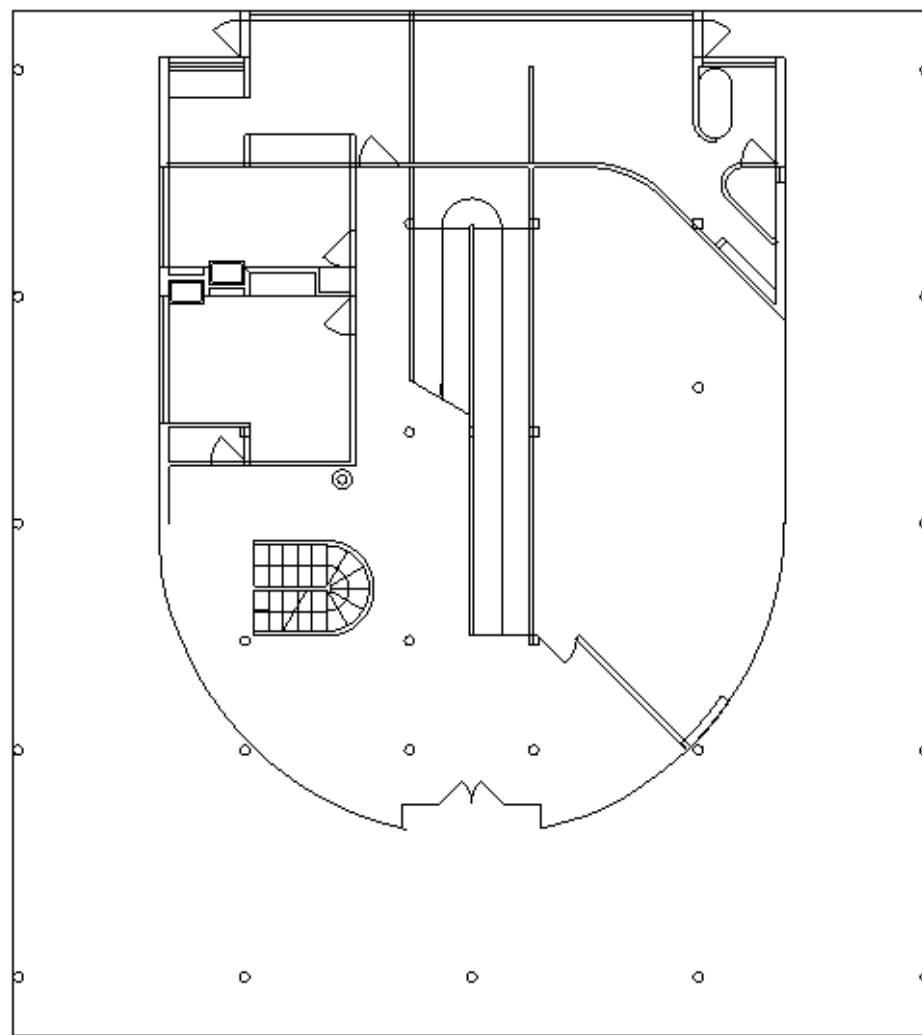
MODELO 3D

Alçados

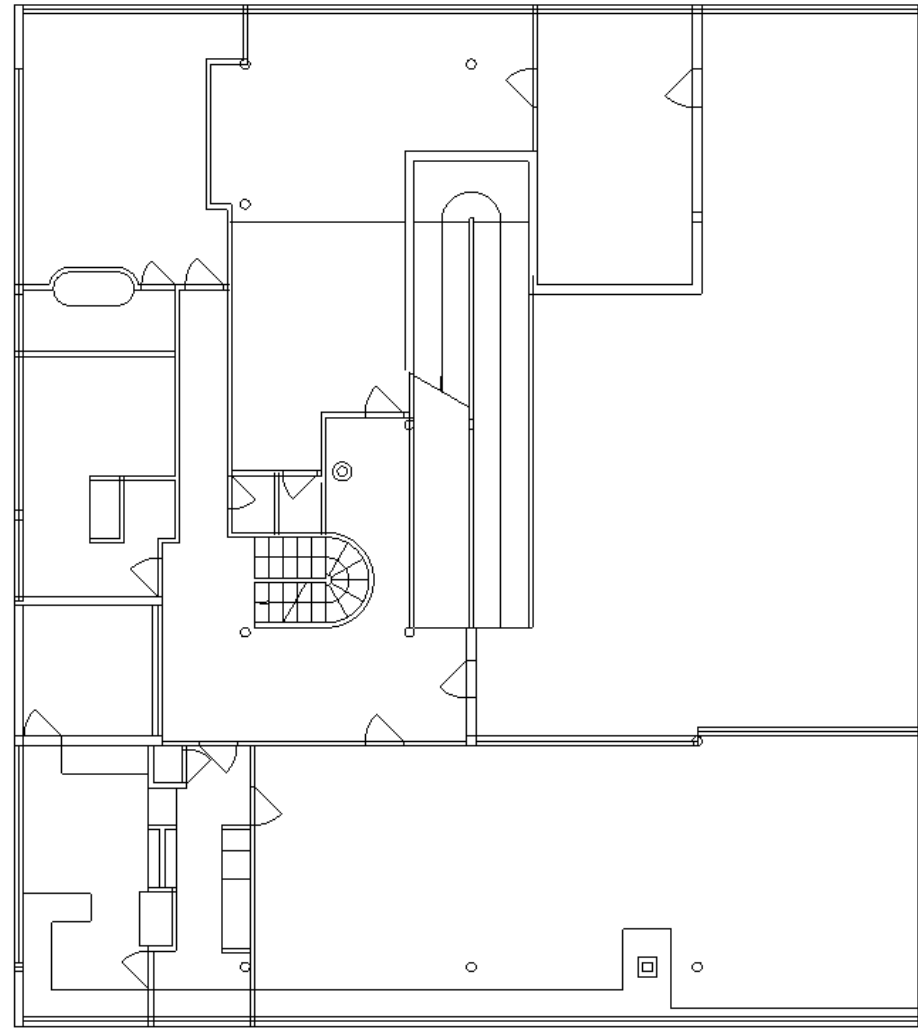
Interior

INDICE

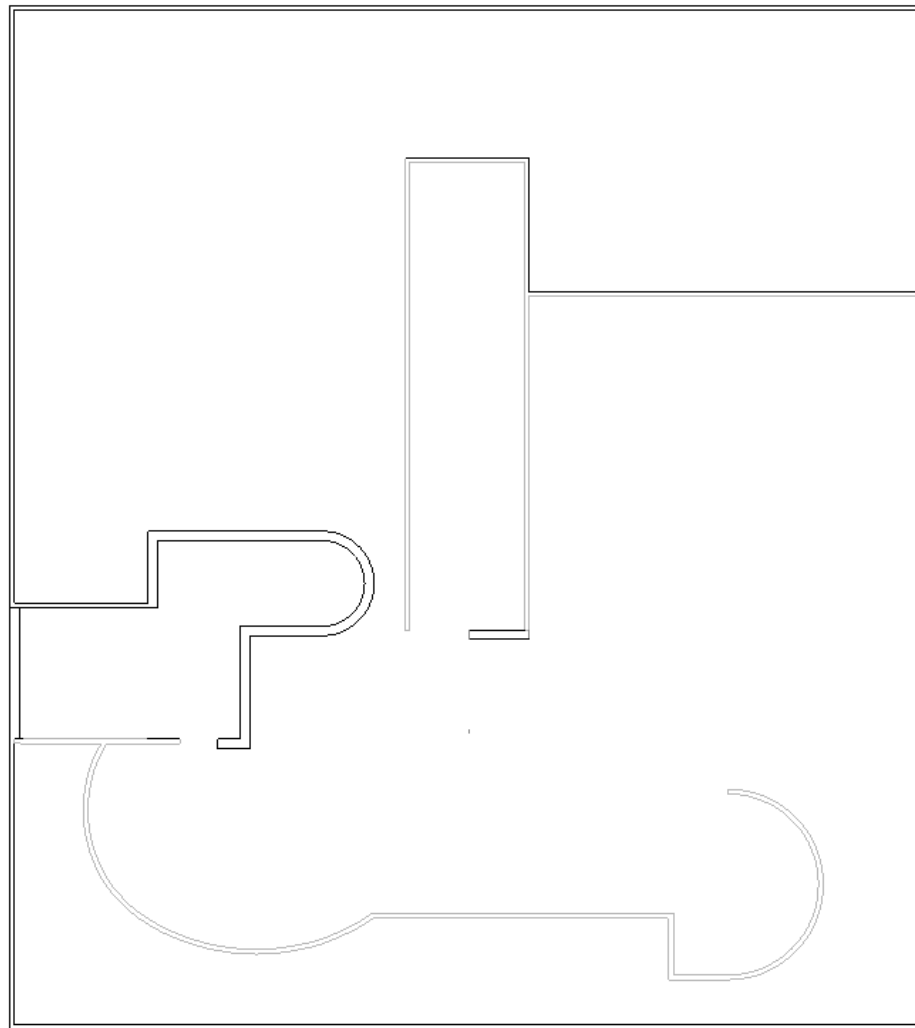
Desenhos Técnicos



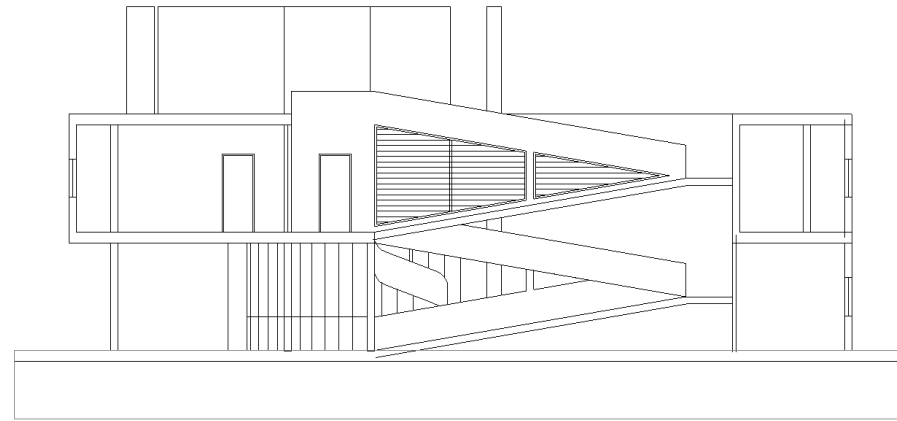
Planta Piso Térreo



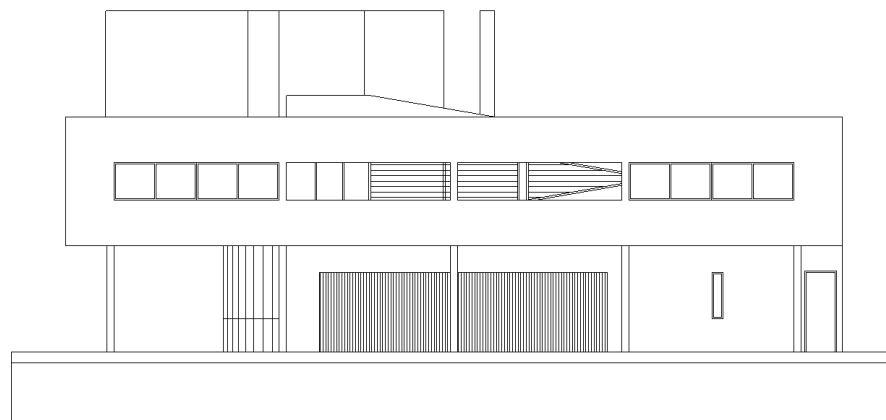
Planta Piso 1



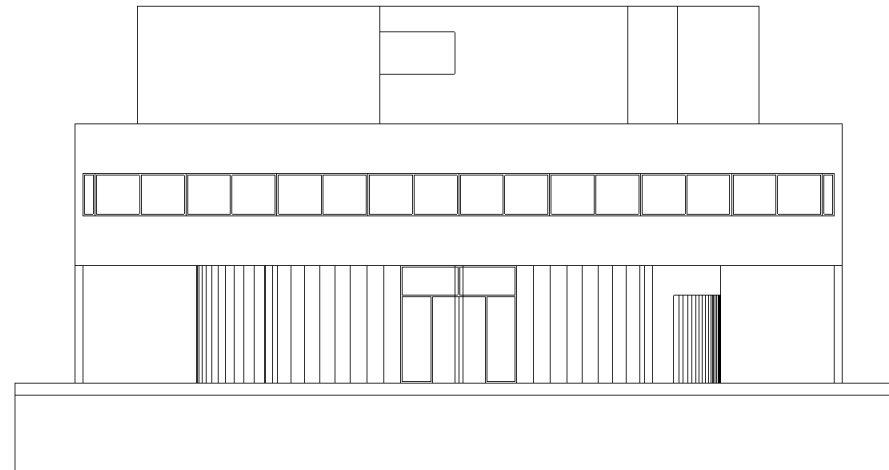
Planta Piso 2



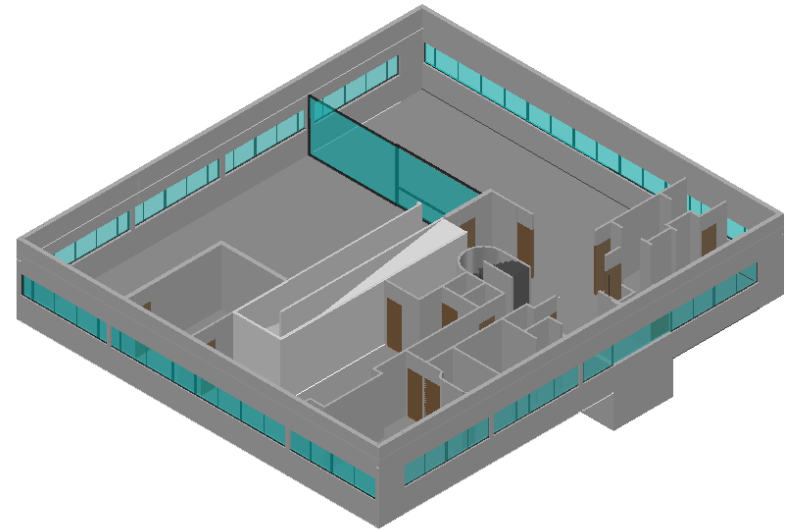
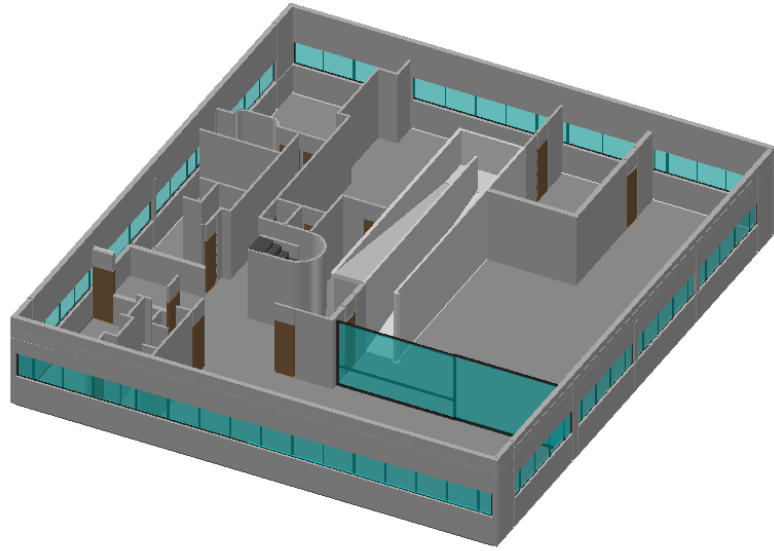
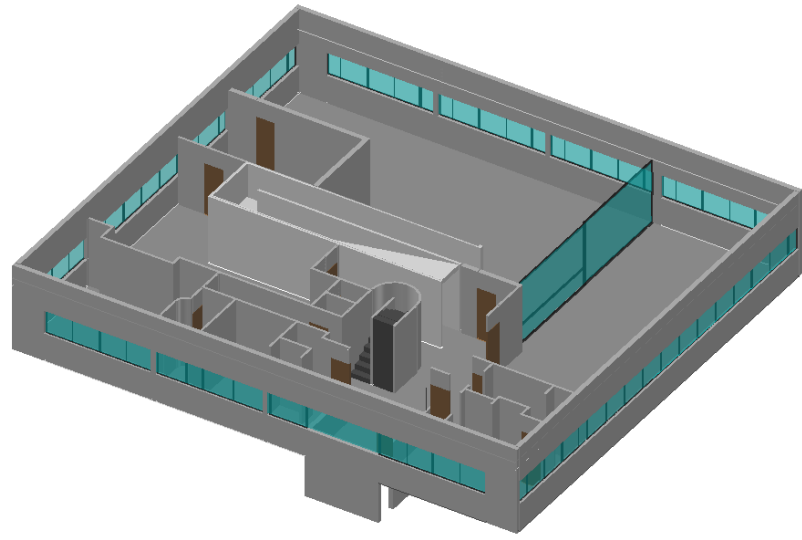
Corte longitudinal



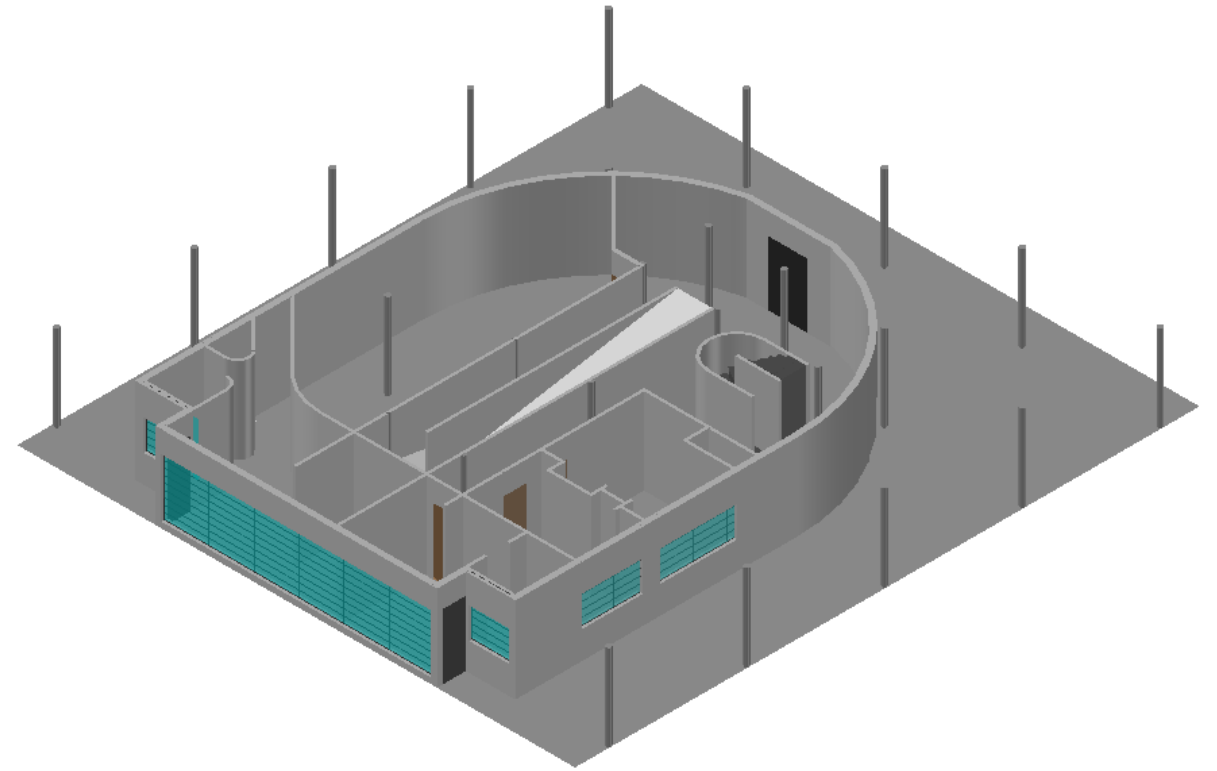
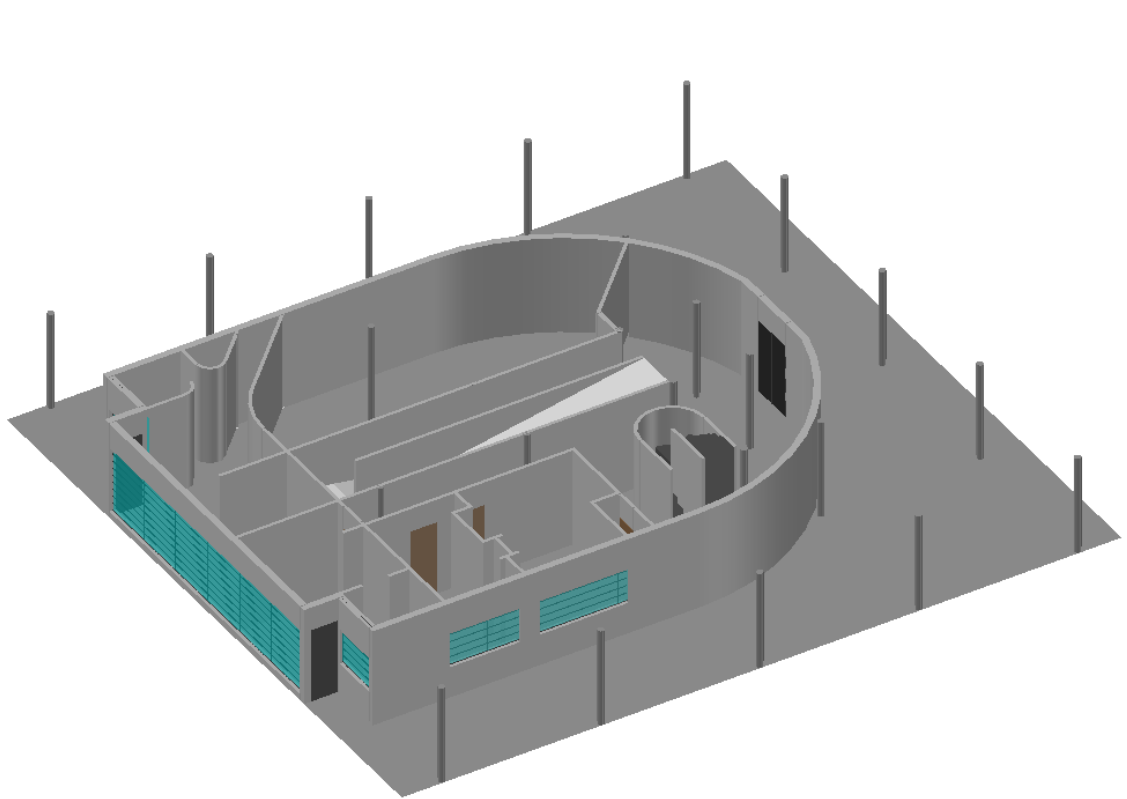
Alçado 1- vista de trás



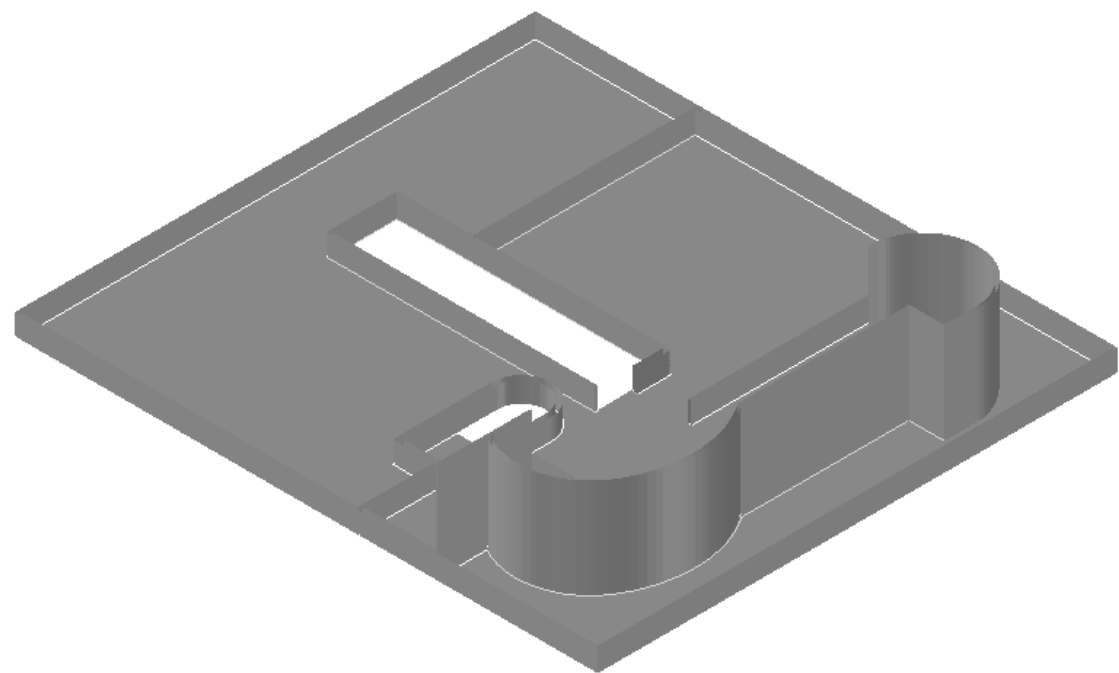
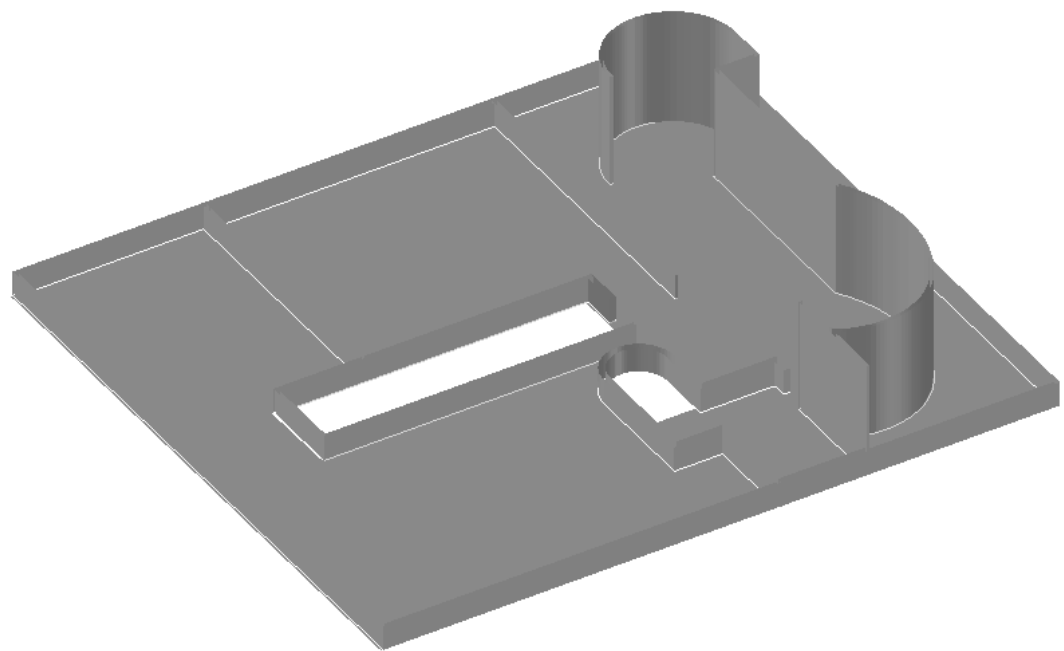
Alçado 2- vista de frente



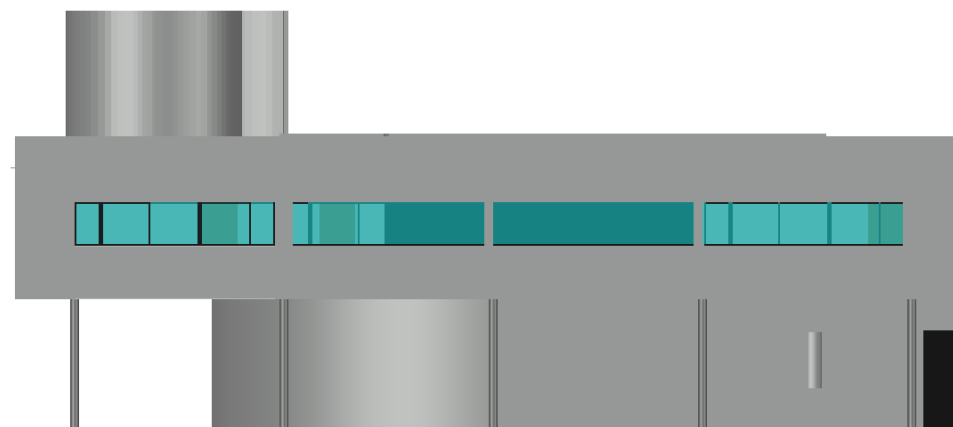
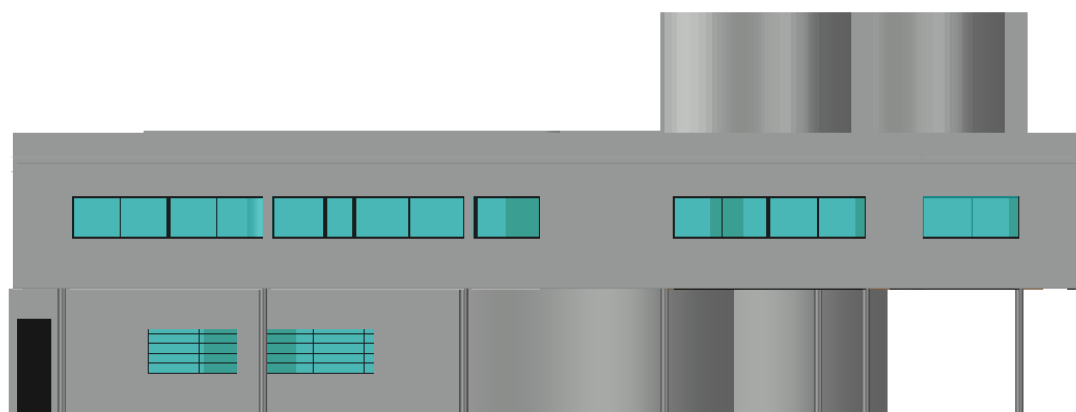
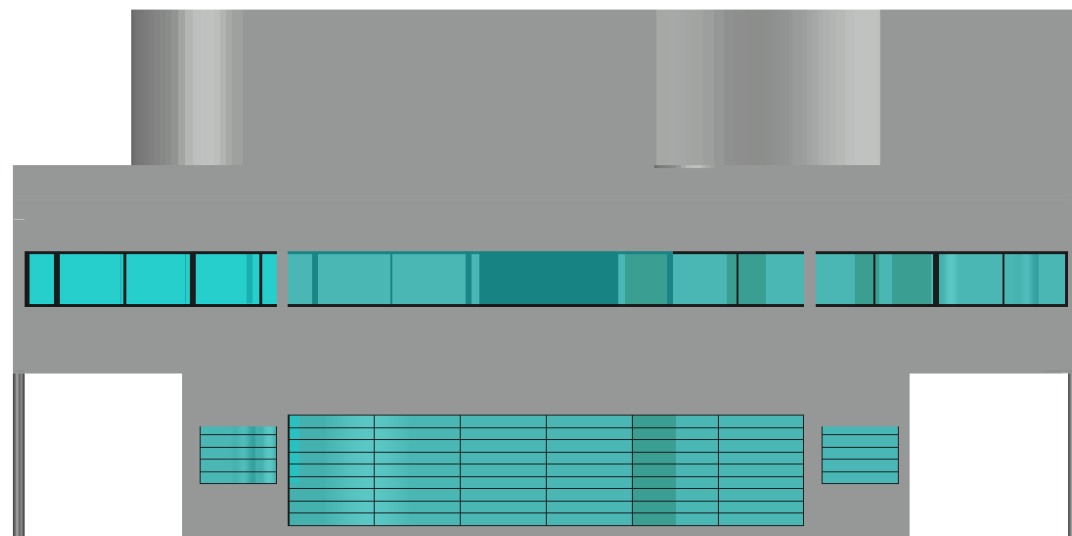
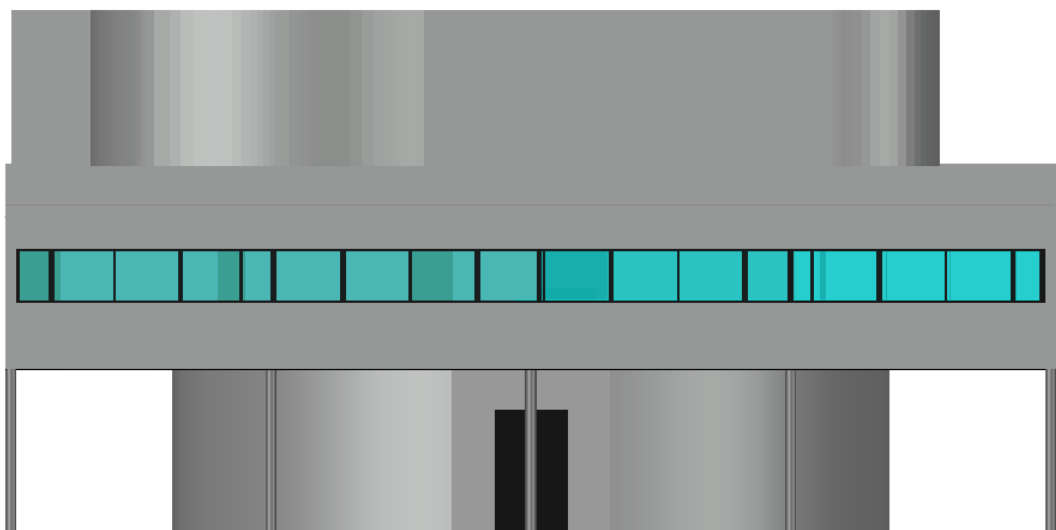
Interior



Interior



Interior



Alçados