

STAIRCASES

SPIRAL STAIRCASE: LABORATORIES AT ENFIELD, MIDDLESEX DESIGNED BY G. A. JELlicoe

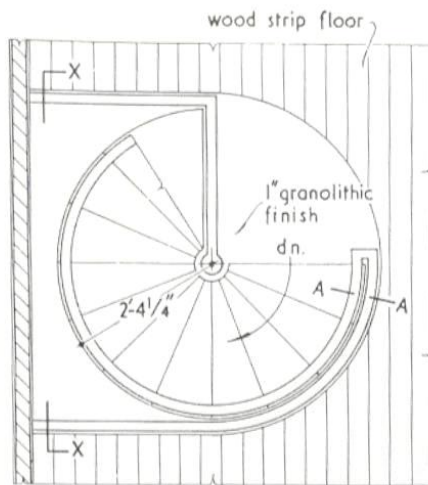
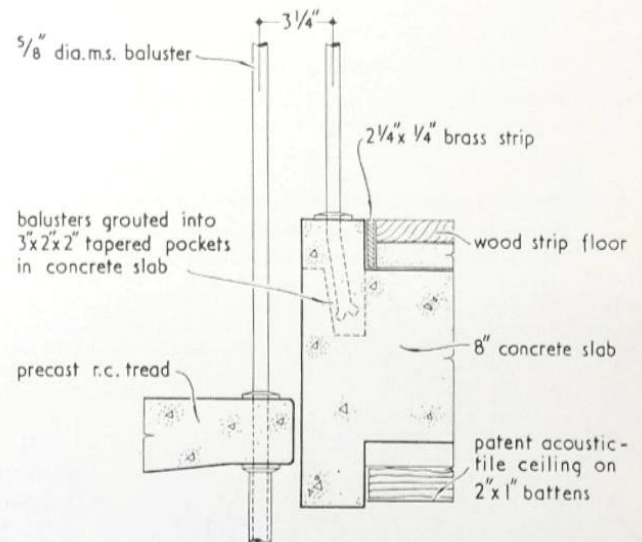
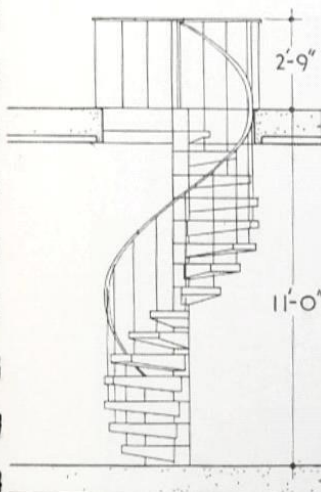
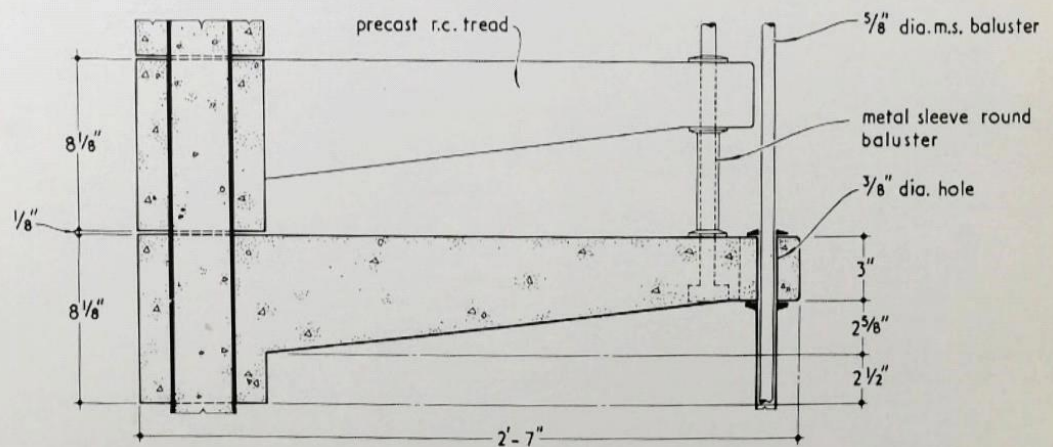
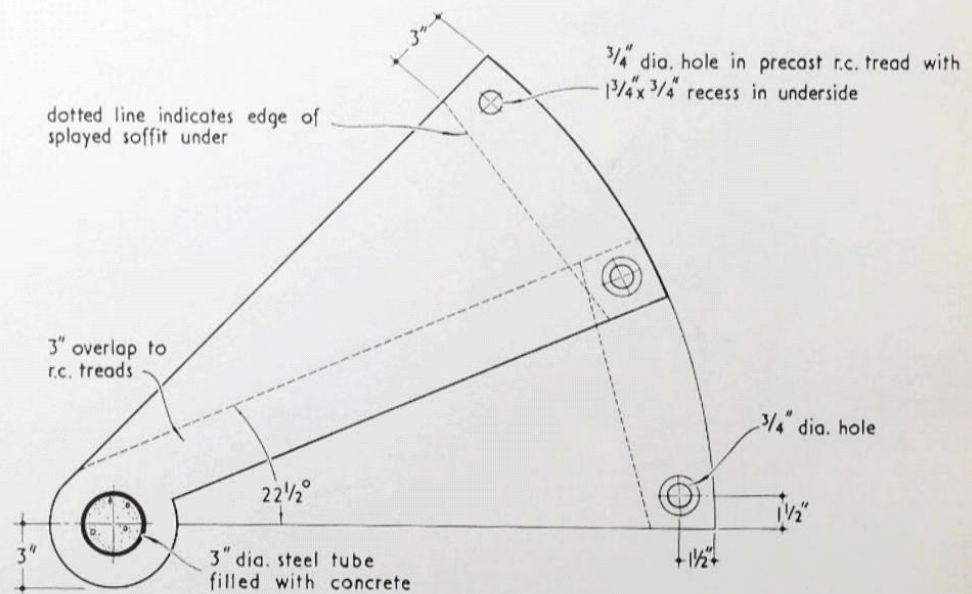
The sequence of construction was as follows:—(1) Newel tube (m.s. tube with r.c. column cast inside) was secured, and treads threaded on. (2) Shuttering for quarter landing at top was fixed (as well as reinforcement connecting stair with floor above) and landing was cast. (3) Balusters were threaded through treads—and through the sleeves serving as spacers—and secured with screw, washer, nut and coverplate. (4) m.s. handrail was screwed on. (Cost of stair: £130, excluding fixing).



PL

K
ST
sc

P

PLAN OF STAIRCASE, scale $\frac{3}{8}" = 1'-0"$ DETAIL AT A-A, scale $\frac{1}{2}" = 1'-0"$ KEY ELEVATION OF STAIRCASE ON X-X
scale $\frac{3}{16}" = 1'-0"$ PLAN AND SECTION OF TYPICAL TREAD, scale $\frac{1}{2}" = 1'-0"$