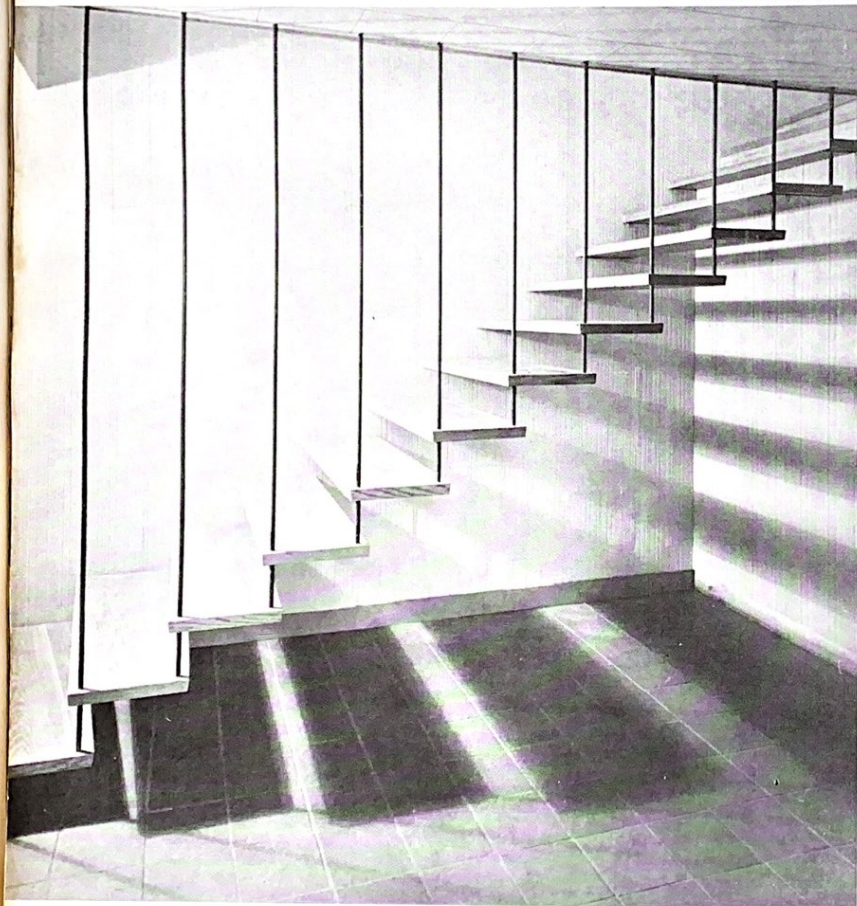


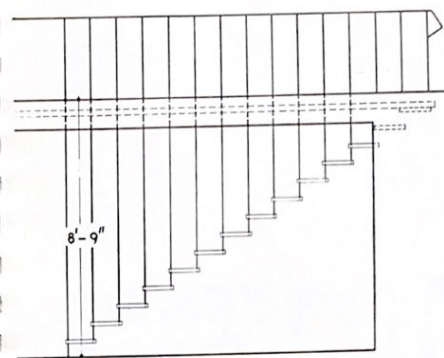
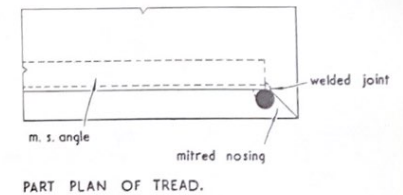
STAIRCASES

STAIRCASE: HOUSE IN HANOVER, NEW HAMPSHIRE DESIGNED BY E. H. AND M. K. HUNTER

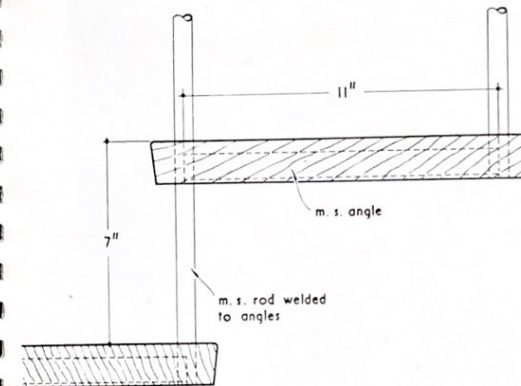
The hardwood treads are supported at the wall on metal angles concealed behind panelling, and at the outer end by painted rods which are continued through the ceiling to act as balusters on the landing above.



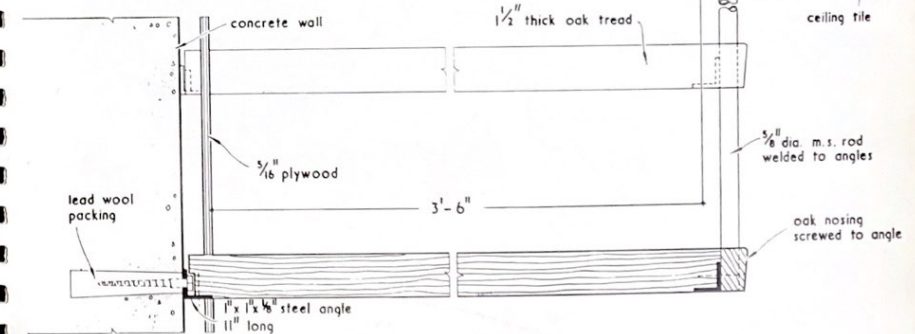
STAIRCASES



ELEVATION OF STAIR. scale $\frac{1}{4}'' = 1'-0''$



LONGITUDINAL SECTION THROUGH STAIR. scale $\frac{1}{4}$ full size



CROSS SECTION THROUGH STAIR AND HANDRAIL. scale $\frac{1}{4}$ full size